

Ordinance #309

An ordinance to change the zoning map of Ashland City, Tennessee on a portion of Smith Street.

BE IT ORDAINED by the Mayor and Council of Ashland City, Tennessee that the zoning map of Ashland City, Tennessee be changed from R-1 to R-1 PUD on a portion of Smith Street described as follows:

Tract #1: Beginning at a stake, red oak and white oak pointers, J.B. Patton's (formerly D.W. Stack's) corner; thence S. 27 1/2 poles to the center of a branch, opposite a crevice in the rock, with a pile of stone pointer's; thence with the center of said branch, S. 66 3/4 degrees W. 30 poles; thence N. 88 degrees W. 6-1/10 poles to where the old road crosses the branch, the Ashland City and Sulphur Springs Road; thence with said road, S. 49 degrees W. 7 poles; thence S. 6 1/2 degrees W. 36-8/10 poles to a blazed elm on the west side of said road; thence S. 86 degrees E. 70 poles to a stake in a hollow, about 1 1/2 poles west of the channel; thence N. 12 1/2 degrees E. 23 1/2 poles to a hornbeam in hollow; thence S. 88 1/2 degrees E. 53-6/10 poles to a hickory stump; thence N. 3 3/4 degrees E. 63 1/2 poles to a sugar tree stump; thence N. 89 1/2 degrees W. 89 1/2 poles to the beginning, containing 50 acres, more or less.

Tract #2: Adjoining tract #1 above described, and beginning at a stone, formerly a hickory mentioned in the third call of tract 2 of the division of M.E. Gleaves land; thence N. 15 3/4 degrees E. 25 poles to a hornbeam, a corner of Tract 1 above described, thence N. 88 1/4 degrees W. 53 poles to a hickory stump; thence S. 5 1/4 degrees W. 41 1/2 poles to a stake; thence N. 86 1/2 degrees W. 36 poles to two small dogwoods; thence N. 51 3/4 degrees W. 22-1/5 poles to the beginning, containing 13 acres, more or less.

Being the same property conveyed to Elizabeth Hatcher and Randy Traywick by deed from Samuel Adkisson, Jr., Ruth Adkisson, Thomas James Adkisson, Ann Weeks Adkisson, Dorothy Adkisson Woods Bock, and Robert William Bock, of record in Book 248, page 848, Register's Office for Cheatham County, Tennessee.

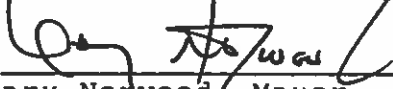
This is the same property also known as 117 Smith Street, Ashland City, Tennessee.

This ordinance shall take effect 20 days after its second and final passage the public welfare requiring it.


1st reading 6-14-05

Public hearing 7-12-05

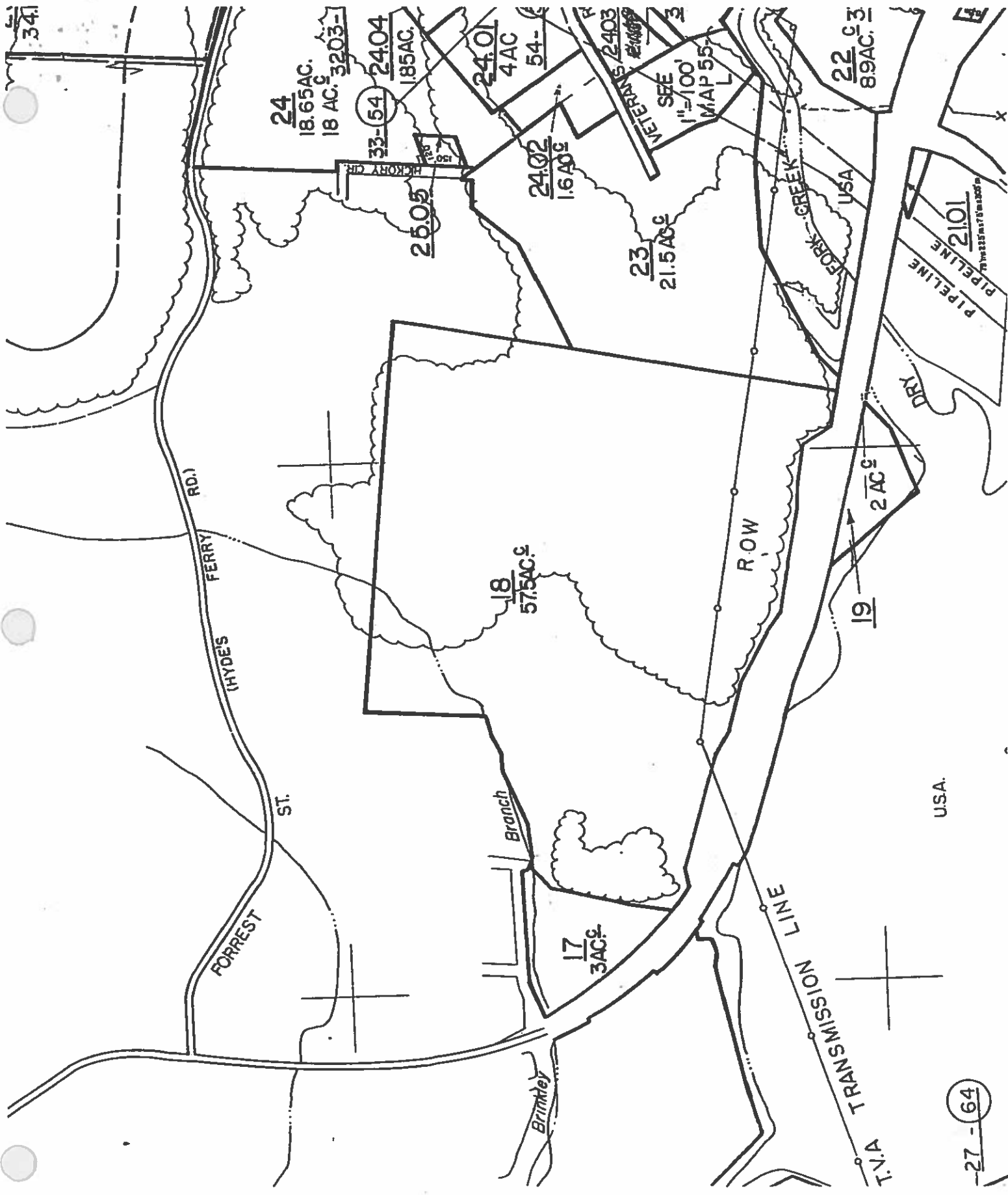
2nd reading 7-12-05



Gary Norwood, Mayor



Phyllis Schaeffer, City Recorder



34

24
18.65 AC.
18 AC. 3203-

33-54 24.04
185 AC.

24.01
4 AC
54-

24.02
16 AC

23
21.5 AC

22 C 3
89 AC

25.05
HICKORY CR.

SEE
MAP 55

VETERANS
2403

PIPELINE
21.01
DRY

RD.)

FERRY

(HYDES

ST.

FORREST

Branch

17
3 AC

Britney

18
57.5 AC

ROW

19

2 AC

TRANSMISSION LINE

T.V.4

USA.

REZONE
FROM R-1 TO R-1 PUD

ATTACHMENT

TRACT NO. 1: Beginning at a stake, red oak and white oak pointers, J. B. Patton's (formerly D. W. Stack's) corner; thence S. 27 1/2 poles to the center of a branch, opposite a crevice in the rock, with a pile of stone pointer's; thence with the center of said branch, S. 66-3/4° W. 30 poles; thence N. 88° W. 6-1/10 poles to where the old road crosses the branch, the Ashland City and Sulphur Springs Road; thence with said road, S. 49° W. 7 poles; thence S. 6 1/2° W. 36-8/10 poles to a blazed elm on the west side of said road; thence S. 86° E. 70 poles to a stake in a hollow, about 1 1/2 poles west of the channel; thence N. 12 1/2° E. 23 1/2 poles to a hornbeam in hollow; thence S. 88 1/2° E. 53-6/10 poles to a hickory stump; thence N. 3-3/4° E. 63 1/2 poles to a sugar tree stump; thence N. 89 1/2° W. 89 1/2 poles to the beginning, containing 50 acres, more or less.

TRACT NO. 2: Adjoining Tract No. 1 above described, and beginning at a stone, formerly a hickory mentioned in the third call of Tract 2 of the division of M. E. Gleaves land; thence N. 15-3/4° E. 25 poles to a hornbeam, a corner of Tract 1 above described, thence N. 88 1/4° W. 53 poles to a hickory stump; thence S. 5 1/4° W. 41 1/2 poles to a stake; thence N. 86 1/2° W. 36 poles to two small dogwoods; thence N. 51 3/4° W. 22-1/5 poles to the beginning, containing 13 acres, more or less.

Being the same property conveyed to Elizabeth Hatcher and Randy Traywick by deed from Samuel Adkisson, Jr., Ruth Adkisson, Thomas James Adkisson, Ann Weeks Adkisson, Dorothy Adkisson Woods Bock, and Robert William Bock, of record in Book 248, page 848, Register's Office for Cheatham County, Tennessee.

This is the same property also known as 117 Smith Street, Ashland City, Tennessee.