

Ordinance #244

An Ordinance to change the zoning map of Ashland City, Tennessee on Hwy 12S in Ashland City, Tennessee.


Be It Ordained by the City Council of the Town of Ashland City, that the zoning map of Ashland City, Tennessee be changed from R-3 to C-2 on the commercial properties on Hwy 12S beginning at 2055 Hwy 12S and ending at 1317 Hwy 12S and then the properties, 1401 Hwy 12S and 1205 Old Hydes Ferry Pike be rezoned from R-1 to C-2.

This Ordinance shall take effect 20 days after its 2nd passage the public welfare requiring it.

1st Reading 10-9-01

Public Hearing 11-13-01

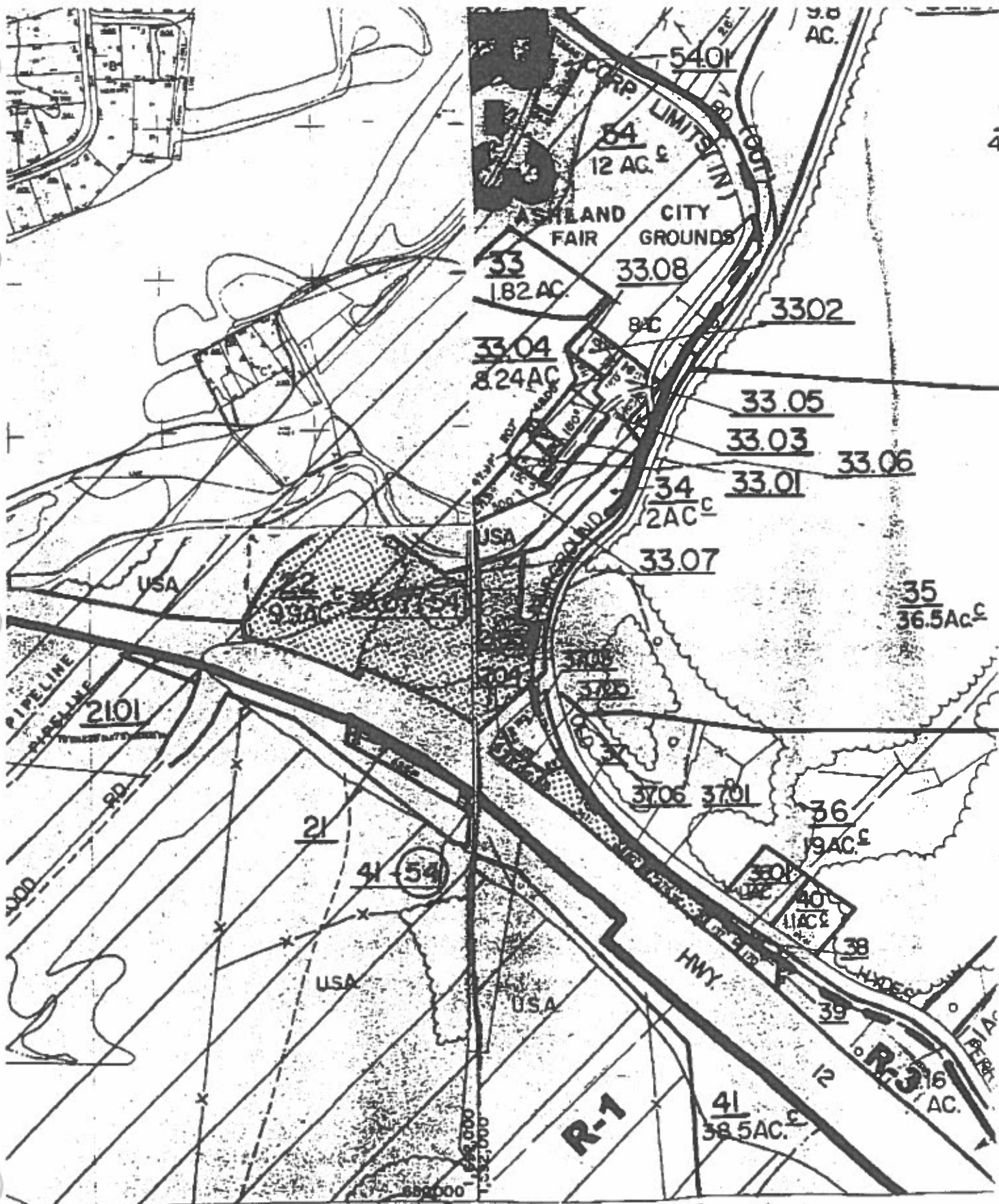
2nd Reading 11-13-01



Gary Norwood, Mayor



Phyllis Schaeffer, City Recorder



Rezoning Request
 from R-3 to
 → C-2 ←

ASHLAND COUNTY, TENN.

PREPARED FOR
 TENNESSEE STATE BOARD OF ZONING

Rezoning
request
from R-1 to
→ C-2 ←

